

VALVES

SIDE MOUNT

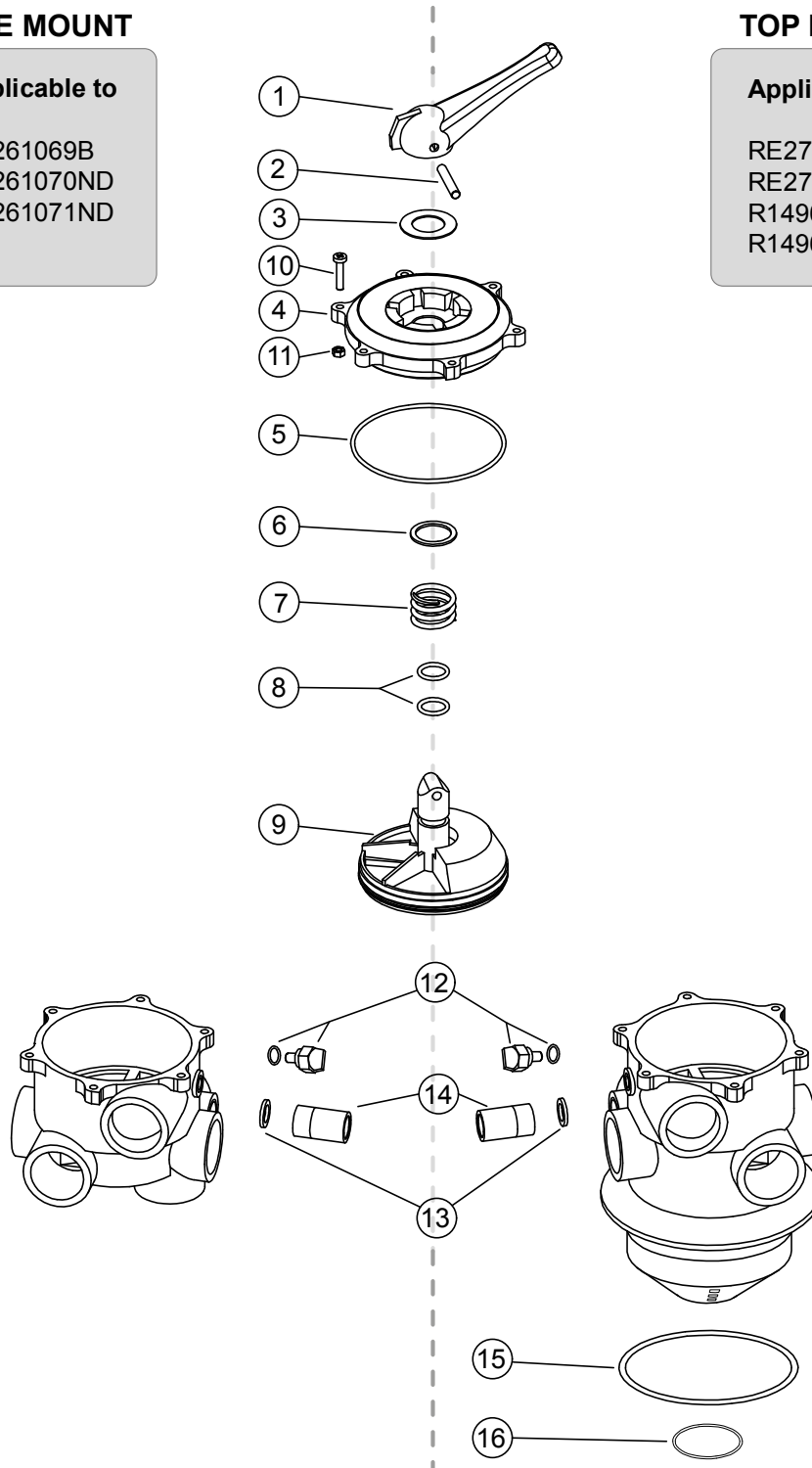
Applicable to

RE261069B
 RE261070ND
 RE261071ND

TOP MOUNT

Applicable to

RE272026ND
 RE272029ND
 R14965TM10
 R14965TM20



VALVES

Replacement Parts

No.	Part No.	Description	Part No.	Includes
1	RGA10E01	Valve Handle		1
2	RGA10E02	Pin Handle Valve		1
3	RGA10E03	Ring Handle Valve		1
4	RGB10E06	Cover 1 1/2" Valve - OLD STYLE		1
	RGE20E06	Cover 2" Valve - OLD STYLE		1
	RGB10E06ND	Cover 1 1/2" Valve - NEW STYLE		1
	RGE20E06ND	Cover 2" Valve - NEW STYLE		1
5	RGB10E07	Cover O-ring 1 1/2" Valve		1
	RGC20E07	Cover O-ring 2" Valve		1
6	RGA10E08	Washer Valve		1
7	RGA10E09	Spring Valve		1
8	RGA10E10	Axle O-Ring Valve		2
9	RGB10E13	Rotor 1 1/2" Valve - 'molded in' star gasket		1
	RGC20E13	Rotor 2" Valve - 'molded in' star gasket		1
10	RGA10E04	Screw Valve		6
11	RGA10E14	Nut Valve		6
12	RGA10E17	Gauge Nut with O-Ring		1
13	RGD20E15	O-Ring Sight Glass		1
14	RGD20E16	Sight Glass		1
15	R281008	O-Ring 1 1/2" Valve		1
	R250001	O-Ring 2" Valve		1
16	R281018	O-Ring 1 1/2" Valve		1
	R281009	O-Ring 2" Valve		1
Not Shown				
	RGB10E12	Star Gasket 1 1/2" Valve - Applicable to valves prior to 2007		1
	RGC20E12	Star Gasket 2" Valve - Applicable to valves prior to 2007		1
	R152046	Manometer - Pressure Gauge (back connection)		1
	R152047	Manometer - Pressure Gauge (bottom connection)		1
Assemblies				
	G-COV15-SM	Cover Assembly 1 1/2" Valve (Incl. Partn° 1 to 11) - OLD STYLE		1
	G-COV20-SM	Cover Assembly 2" Valve (Incl. Partn° 1 to 11) - OLD STYLE		1
	G-COV15-SMND	Cover Assembly 1 1/2" Valve (Incl. Partn° 1 to 11) - NEW STYLE		1
	G-COV20-SMND	Cover Assembly 2" Valve (Incl. Partn° 1 to 11) - NEW STYLE		1

Rev. 08/2016

Applicable to all valves, except Sta-Rite Valve R14965-TMKH